

PRESTIGE 560

YEAR

2017

LENGTH | M

16.14

LOCATION

IBIZA

ASKING PRICE

730.000 €

VAT PAID

SPECIFICATIONS

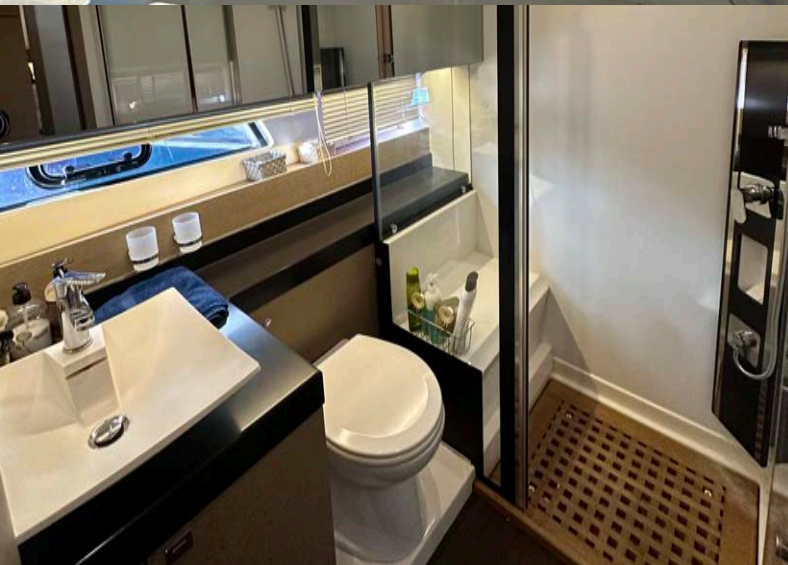
| | |
|--------------------------|-------------|
| YEAR (BUILT / REFIT) | 2017 / 2023 |
| LENGTH (M) | 16.14 |
| BEAM (M) | 4.74 |
| DRAFT (M) | 1.17 |
| DISPLACEMENT (T) | 17.700 |
| HULL MATERIAL | GLASS FIBRE |
| CRUISING SPEED (KN) | 24 |
| MAX SPEED (KN) | 30 |
| TOTAL POWER (HP) | 1.200 |
| ENGINE(S) | 2 x CUMMINS |
| FUEL TYPE | DIESEL |
| FUEL CAPACITY (L) | 2.200 |
| FRESH WATER CAPACITY (L) | 800 |
| CABINS | 3 |
| WC | 2 |
| MAX NUMBER OF PASSENGERS | 12 |
| LOCATION | IBIZA |

CONFIGURATION

| | |
|---|---|
| Background taps changed 2023 | Fusion + Bose sound system |
| Maintenance 2023 | Electrically opening windows from remote control |
| Diesel tank cleaning 2023 | Manual store |
| Desalinator 140L/H | 3 cabins, 2 bathrooms |
| AIS (Automatic Identification System) | 1 twin bed, 2 beds possible to join into 1 |
| Water tanks 2x 400L | Crew cabin, 1 bed with shower, bathroom, AC |
| Raymarine (marine electronics) | 25% vacuum |
| Diesel fuel 2200L, 2 separate tanks | 30% full |
| Generator powered, 1000h, reviewed with invoices | Integrated VHF (Very High Frequency) radio |
| Engine hours 1070h | Depth sounder |
| Cummins 2x600 | Radar |
| Smartcraft IPS (Integrated Propulsion System), bow thruster | Rings for fender support |
| Hydraulic platform | Sofa bed in the living room |
| Heating AC | Hydraulic system table in the living room, lowering and raising |
| 2 refrigerators, 2 freezers | 4-burner stove |
| Aft bimini | Oven/microwave |
| Flybridge bimini awning | Emergency radio beacon |
| Controls at the stern with IPS | Life raft |



ASTRAYACHTS



ASTRA YACHTS SL
Calle San Telmo 2
ES-07800 Ibiza

+34 971 310610 | +34 660 055645
info@astrayachts.com
astrayachts.com